



## PPS26 Surface Read-Out Pressure Gauge

The PPS26 silicon-sapphire electronic downhole surface readout gauge is designed with state of the art surface read-out technology.

The gauge sends pressure and temperature data from downhole to surface on the real time basis through one single conductor cable.

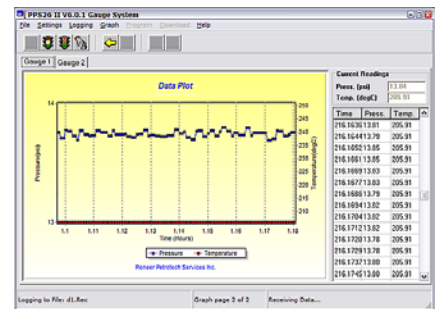
Up to four gauges can be used for one testing job. PPS26 gauges have been successfully operated at well depth up to 6000m (19685 ft).

### APPLICATIONS:

- Pressure Gradients
- Pressure Build-up
- Drill Stem Testing
- Injection Pressure Monitoring
- Interference Tests

### SPECIFICATIONS

<b>Sensor Type</b>	Silicon-Sapphire
<b>Pressure ranges</b>	Up to - 20,000 psi
<b>Pressure Accuracy</b>	±0.03% (full scale)
<b>Pressure Resolution</b>	0.0003%
<b>Pressure Drift</b>	<3 psi / year
<b>Temperature Rating</b>	125°C(257°F) / 150°C(302°F) / 177°C (351°F)
<b>Temperature Accuracy</b>	±0.5°C
<b>Temperature Resolution</b>	0.01°C
<b>Power Source</b>	12 V DC
<b>Communications</b>	USB/RS232
<b>Data Set Contents</b>	Time / pressure / temperature
<b>Outside Diameter</b>	1.0"(25mm) / 1.25" (32 mm)
<b>Overall Length</b>	5.5" (140 mm)
<b>Work Mode</b>	SRO
<b>Service</b>	H <sub>2</sub> S service
<b>Housing Material</b>	Inconel 718 / Stainless Steel 17-4
<b>Sample Rate</b>	1 second to any longer period



Calgary, Alberta, Canada

Phone: 403-282-7669 Fax: 403-282-0509

Toll Free Phone in USA & Canada: 1-888-PP-GAUGE (774-2843)

www.pioneerps.com Email: infopps@pioneerps.com

**"Simple Software and Smart Gauges"**